

➤ Shortform Manual nanoETXexpress-HMI Starterkit

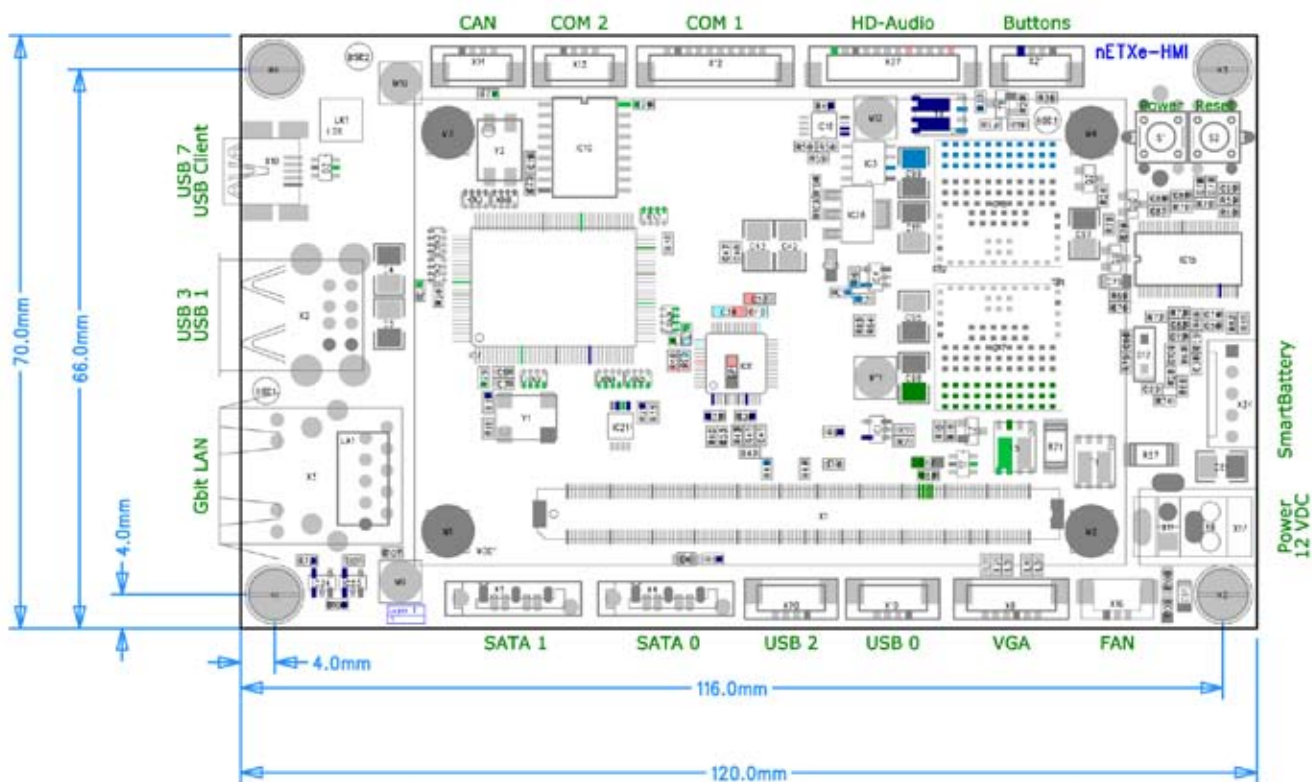


Components	Quantity
PowerSupply PAA060F, with power cable	1
nanoETXexpress HMI Baseboard	1
Display PM070WL4, WVGA (800x480); with soldered backlight cable	1
USB touch controller, ETP-MB-4000UACG	1
USB cable for touch controller , ETP-CB-SXU00	1
JILI adapter, KAB-ADAPT-LVDS, *1	1
JILI cable, KAB-JILI30-TSLD01	1
Audioboard, B08700-KAB-XX-XX01, with cable	1
RS232 socket, KAB-DSUB9-3	1
CRT socket, KAB-VGA-2	1
CAN socket, KAB-CAN-1 (one for COM2/one for CAN)	2
USB socket, KAB-USB-1	2
USB memory stick, 1GB incl. OS-image	1

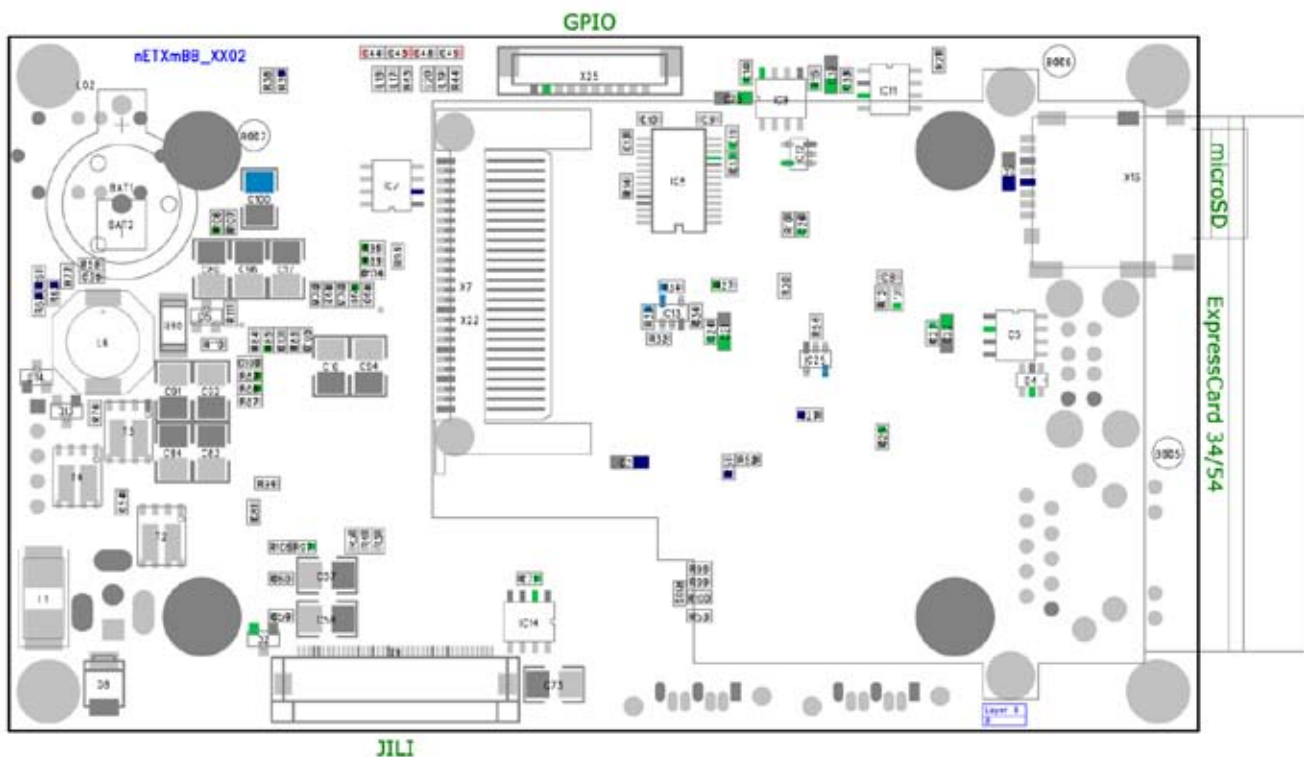
*1: jumper J1 "BKT 12V" (Backlight) and "Panel 3.3V" mounted, jumper J2 removed

➤ Connector Location

Top:



Bottom:



► Connecting the components



mechanics bag, including:

Tyco ExpressCard socket 1759054
2pcs. M2x5mm screws (for socket mounting)
4pcs. M2,5x16mm screws (for module mounting)
4pcs. 3,7x7,0x0,55mm washer (for module mounting)
4pcs. M3x6mm screws (for board standoff)
4pcs. distance bolts (for board standoff)

► Corporate Offices

Europe, Middle East & Africa
 Oskar-von-Miller-Str. 1
 85386 Eching/Munich
 Germany
 Tel.: +49 (0)8165/ 77 777
 Fax: +49 (0)8165/ 77 219
 sales@kontron.com

North America
 14118 Stowe Drive
 Poway, CA 92064-7147
 USA
 Tel.: +1 888 294 4558
 Fax: +1 858 677 0898
 sales@us.kontron.com

Asia Pacific
 17 Building, Block #1, ABP.
 188 Southern West 4th Ring Road
 Beijing 100070, P.R.China
 Tel.: + 86 10 63751188
 Fax: + 86 10 83682438
 kcn@kontron.cn

Kontron Embedded Modules
 Brunnwiesenstr. 16
 94469 Deggendorf
 Germany
 Tel.: +49 (0)991/ 370 24-100
 Fax: +49 (0)991/ 370 24-333
 sales@kontron.com